

## Highlights of Changes in 2.0.11.126

### Support Tariff Code in Item Search

The **Item Search dialog** is now enhanced to allow users to **search by Tariff Code**. Users may tick on the **“Tariff Code”** checkbox in the item search function if wish to search through their items using tariff (Refer Figure 1).

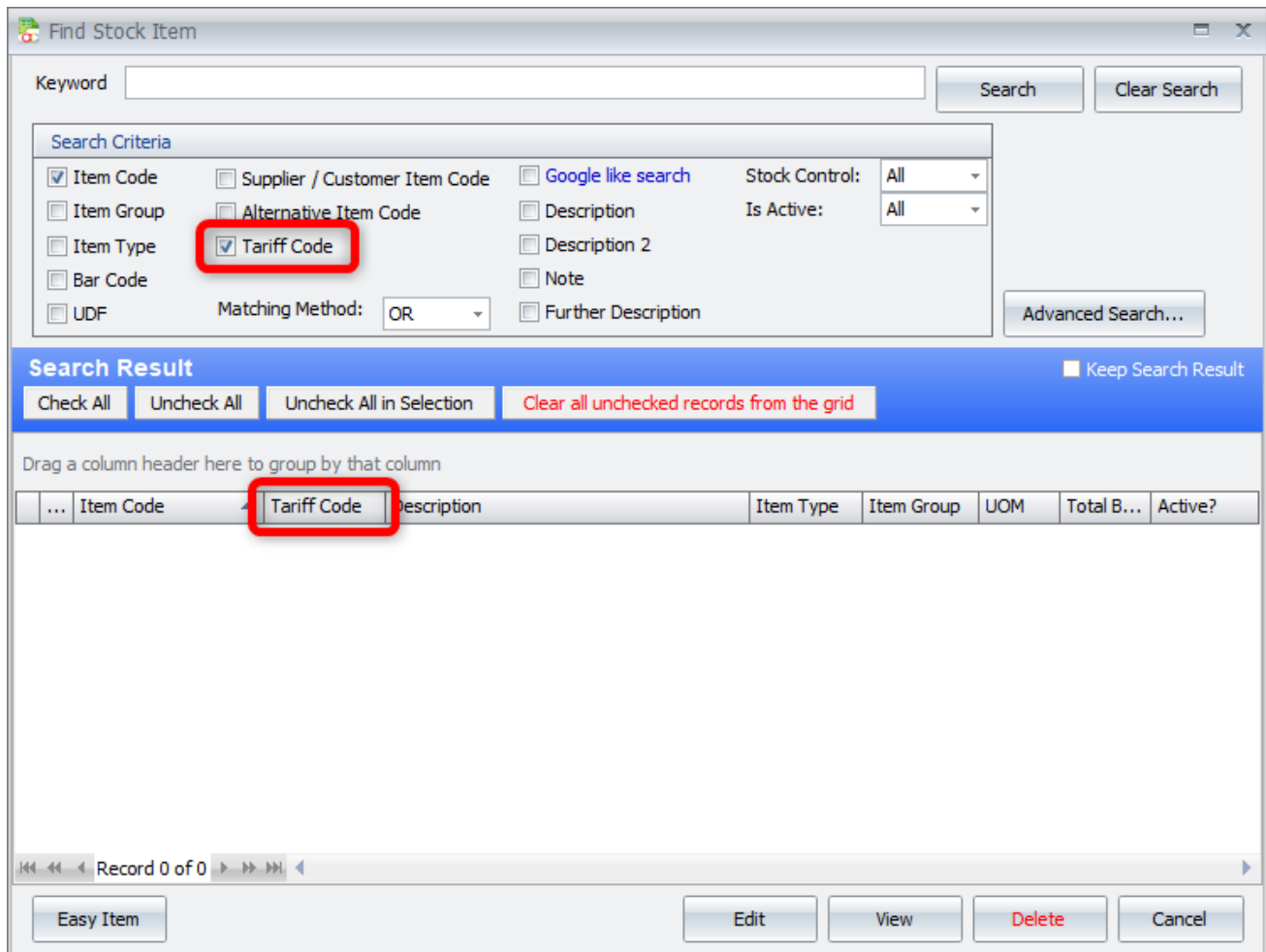


Figure 1

**New Currency – Georgian Lari (GEL) and Egyptian Pound (EGP)**

New System currency had been added into the system – **Georgian Lari (GEL)** and **Egyptian Pound (EGP)**. User can now create account book with the **home** or **base currency** of the mentioned currency (Refer Figure 2).

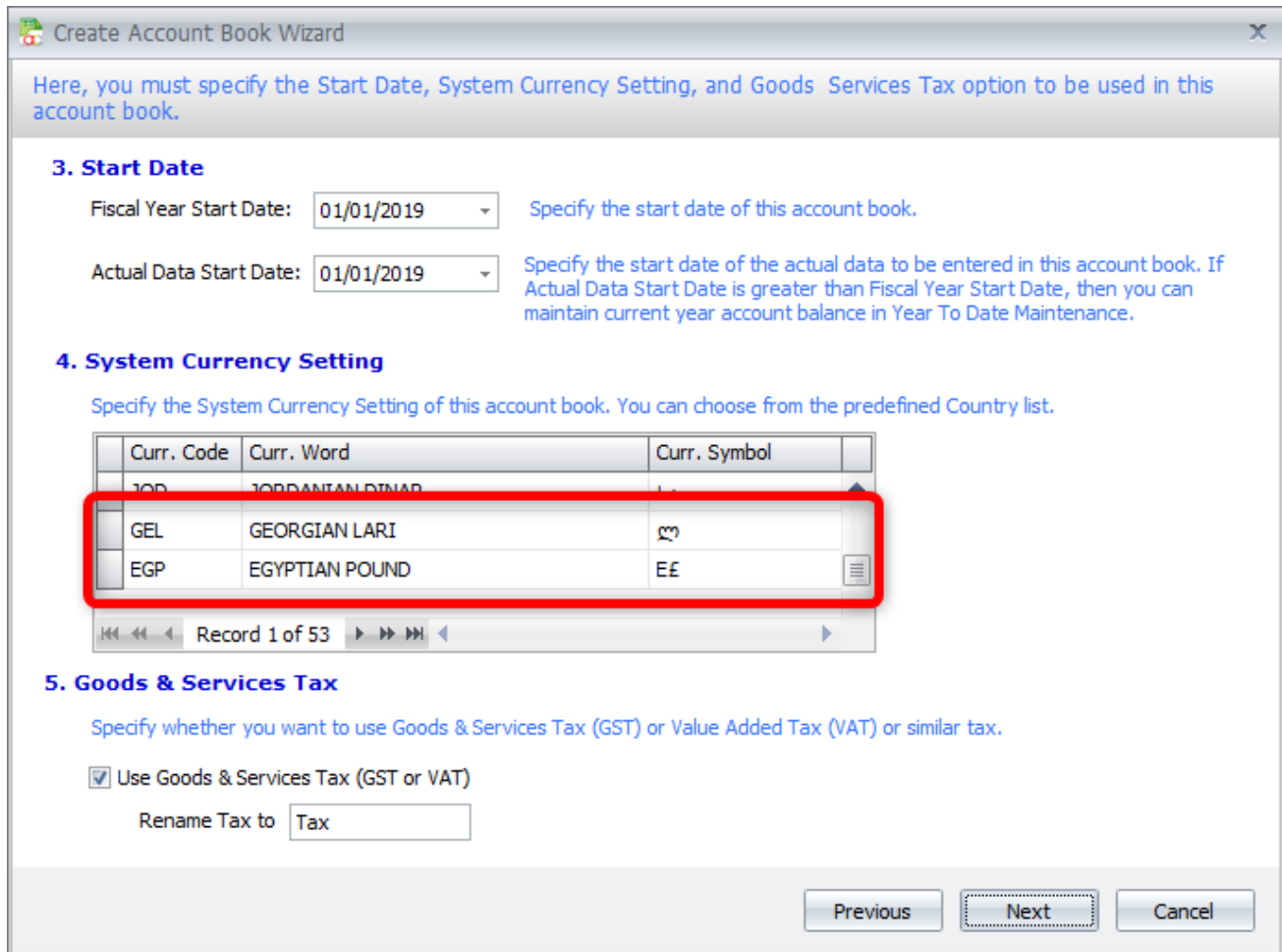


Figure 2

### Service Payment Over 12 Months

A new function had been added into the system – **Service Payment Over 12 Months**. User can find this function under **Menu → Tax → SST → Service Payment Over 12 Months** (Refer Figure 3). This function is to track service tax Invoices where payment is made after 12 months. It also able to display the Taxable Period of those outstanding invoices, usually the 13<sup>th</sup> month SST Period where the tax amount will be calculated.

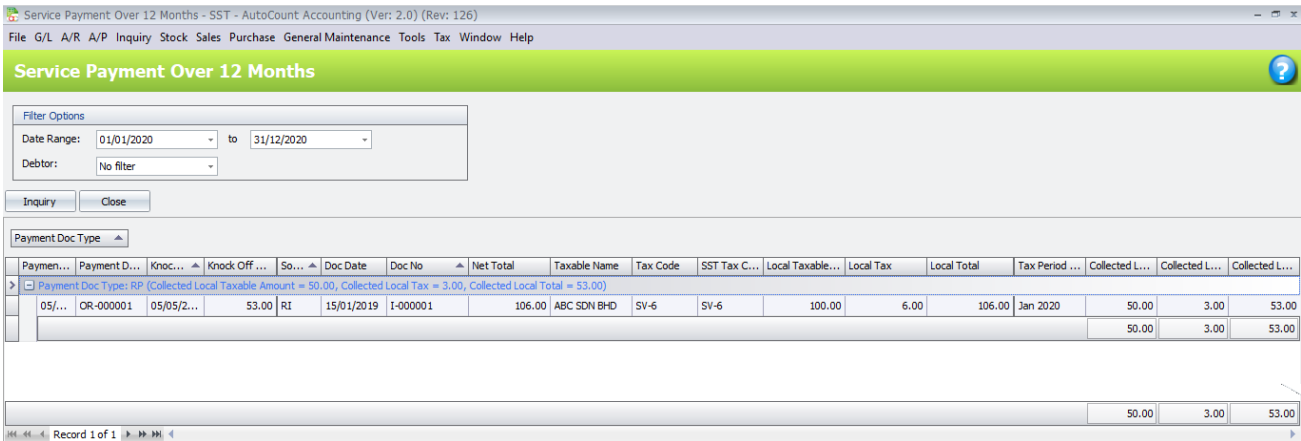


Figure 3

This function is also available in **SST Processor** and **SST Instant Info** where there is a new tab call **“Service Payment Over 12 Months”** after user generate their SST Return (Refer Figure 4). User can only see the payment records when run SST Processor for that same month / period with the knock off month.

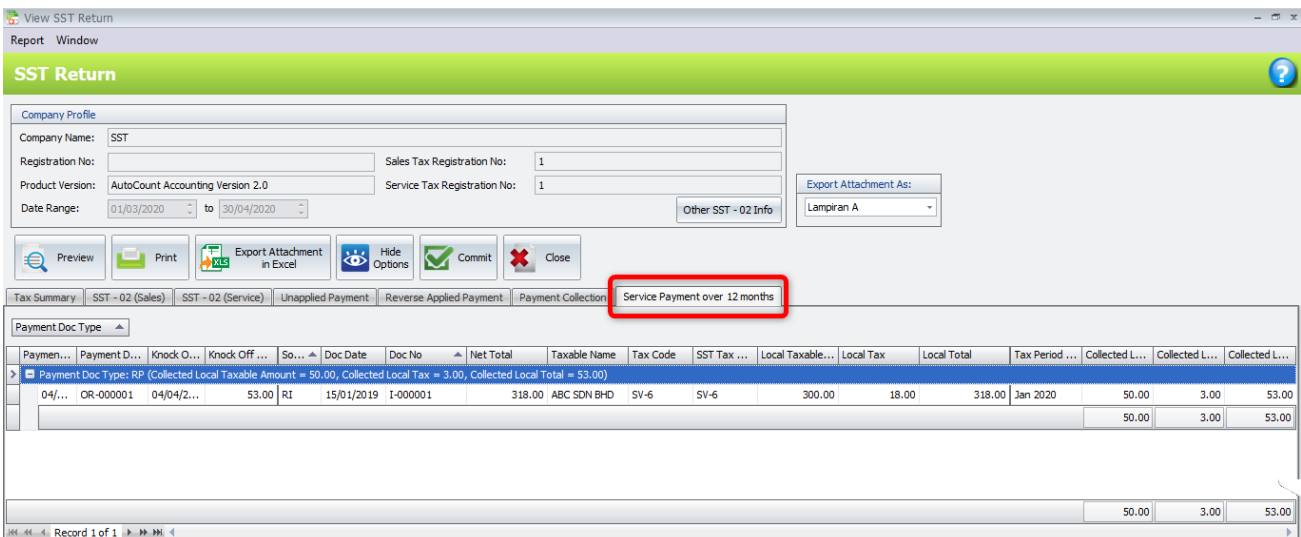


Figure 4

This function is most probably useful when user run their SST Processor and found some payment is not taken into calculation for SST in that period which could already been processed in an earlier period. This usually happens on payment made for invoices which had been outstanding for more than 12 months.

### Outstanding Service Tax Listing to Filter by Invoice more than 12 Months

A new filter had been added into Outstanding Service Tax Listing. User can now choose to **filter** for Invoices that is **outstanding for more than 12 months** and improve the usability of this listing (Refer Figure 5)

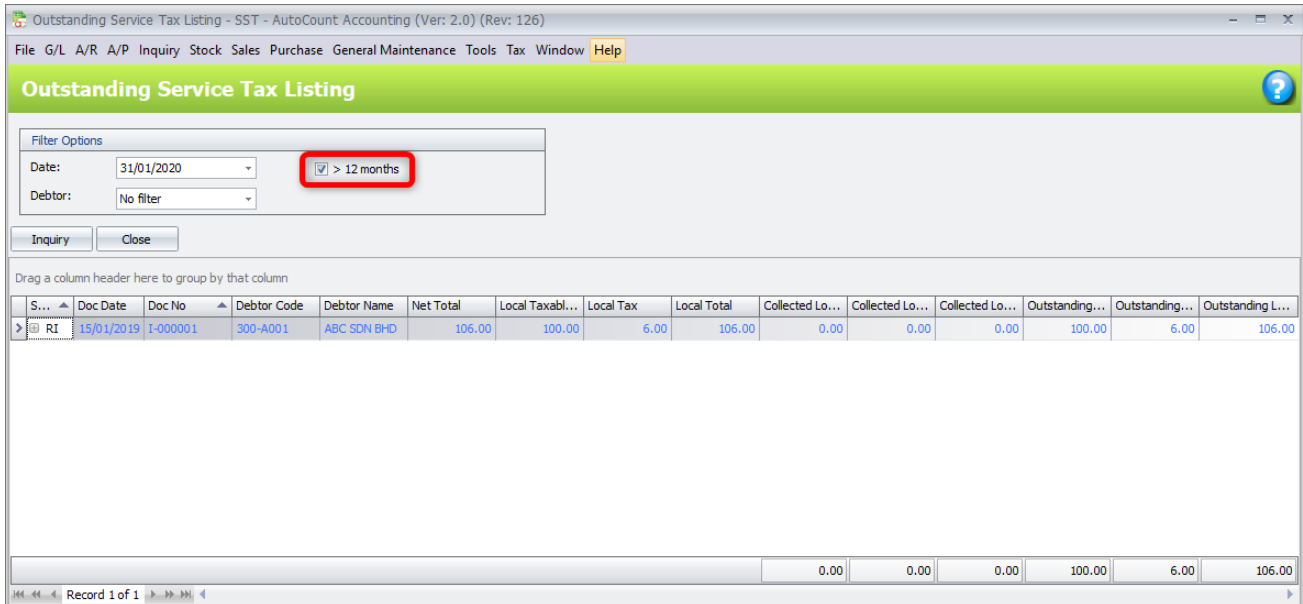


Figure 5

*Prepared by Jae Sen*  
*Last Modified 14/11/2019*